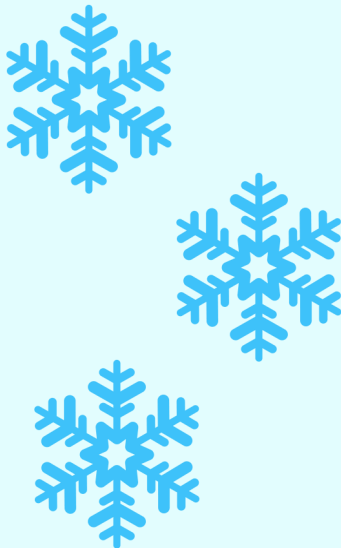




# MEMBERS ONLY



It's **December**, and another year is coming to an end.

2022 was a busy year for us, and we were so happy to welcome people back into the museum after two fairly quiet years.

Highlights of 2022 included the October launch of the "*Virtual Museum of Carleton Place*" in collaboration with Carleton University's History and Theory of Architecture students and our fabulously successful Queen's **Platinum Jubilee Garden Party** in June.

**Our Winter Hours:  
Open Thursday, Friday and Saturday  
10 am - 4pm**

**Contact Information:**



267 Edmund Street Carleton Place, ON K7C 3E8 613-253-7013 [cpbmuseum@outlook.com](mailto:cpbmuseum@outlook.com)

# WHAT'S HAPPENING?

DECEMBER 9

6 - 7:30 PM

## OUTDOOR CAROLING IN THE MUSEUM GARDENS

Join the St. James Church  
choir and organist Ian  
Guenette as we,  
sing along to the bells!

- hot cocoa
- cookies
- ornament craft
- indoor exhibits
- accepting donations to the food bank



ADMISSION  
BY DONATION



It's happening at

The Carleton Place and Beckwith Heritage Museum  
267 Edmund Street



Plan to join us  
in the Museum Gardens on Friday, December 9th  
for some holiday songs!  
We're hoping for good weather and a dusting of snow, but we'll be  
ready to move indoors if necessary.  
We will be accepting donations to the food bank at this event.

## JOIN OUR BOARD OF DIRECTORS



The Carleton Place and Beckwith Historical Society has an opening on The Board of Directors for the position of Secretary.

If you have an interest in joining our Board, please feel free to attend one of our next meetings. The Board meets at the Museum at 7 pm on the 4th Thursday of each month.

Nominations for new Directors will take place at our AGM in April. More information is available on our [website](#):

Contact us at [cpbmuseum@outlook](mailto:cpbmuseum@outlook) with any questions.

## OUR CHRISTMAS WISH LIST

It takes a lot to operate and maintain a non-profit museum. We welcome your help! Our community is always very generous, and this year we've made it easier than ever to help us with some items we're in need of.

Our list for Santa this year includes:

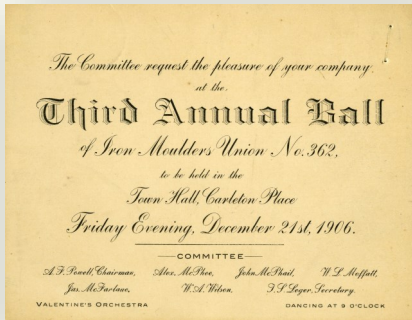
- \* A new vacuum
- \* Archival supplies
- \* A button maker!
- \* A new chest freezer

We've put together a "[wish list](#)" on Amazon for our wonderful elves! Thank you for your continued support of our Museum!

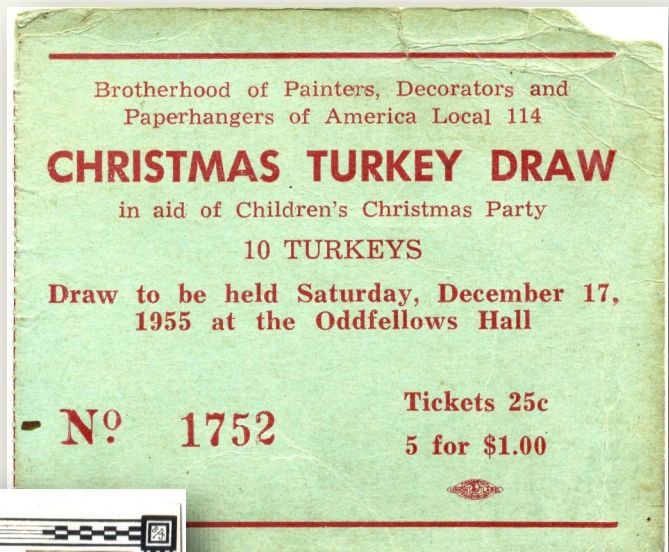




# DECEMBERS OF THE PAST



Glenn Miller, right, with delivery wagon, mid 1970s. His stable was located across from Findlay's foundry at 53 High Street.



Laura Bennett and friends in front of Dowdall's Gas Station lot at the corner of High and Moffatt Streets. C.1940



## LOOKING AHEAD TO 2023

- Learn all about Ecclesiastic Needlework at our February lecture!
- Attend a workshop and learn the art of Pysanky making!
- Help with our **“Enter to Learn”** exhibit celebrating Carleton Place High School’s 100th anniversary by loaning your Bear swag for display!
- Start planning your outfit for our Coronation Day Garden Party!
- Meet community neighbours at our first “Celebrate Culture” event!



Soon our rebuilt Central Bridge will be open to all kinds of traffic! You’ll be able to cross over the Mississippi River once again, like these folks back in 1906. Many of these buildings are gone including Sinclair’s Tailor Shop, The IOOF Lodge, and Findlay’s Foundry.